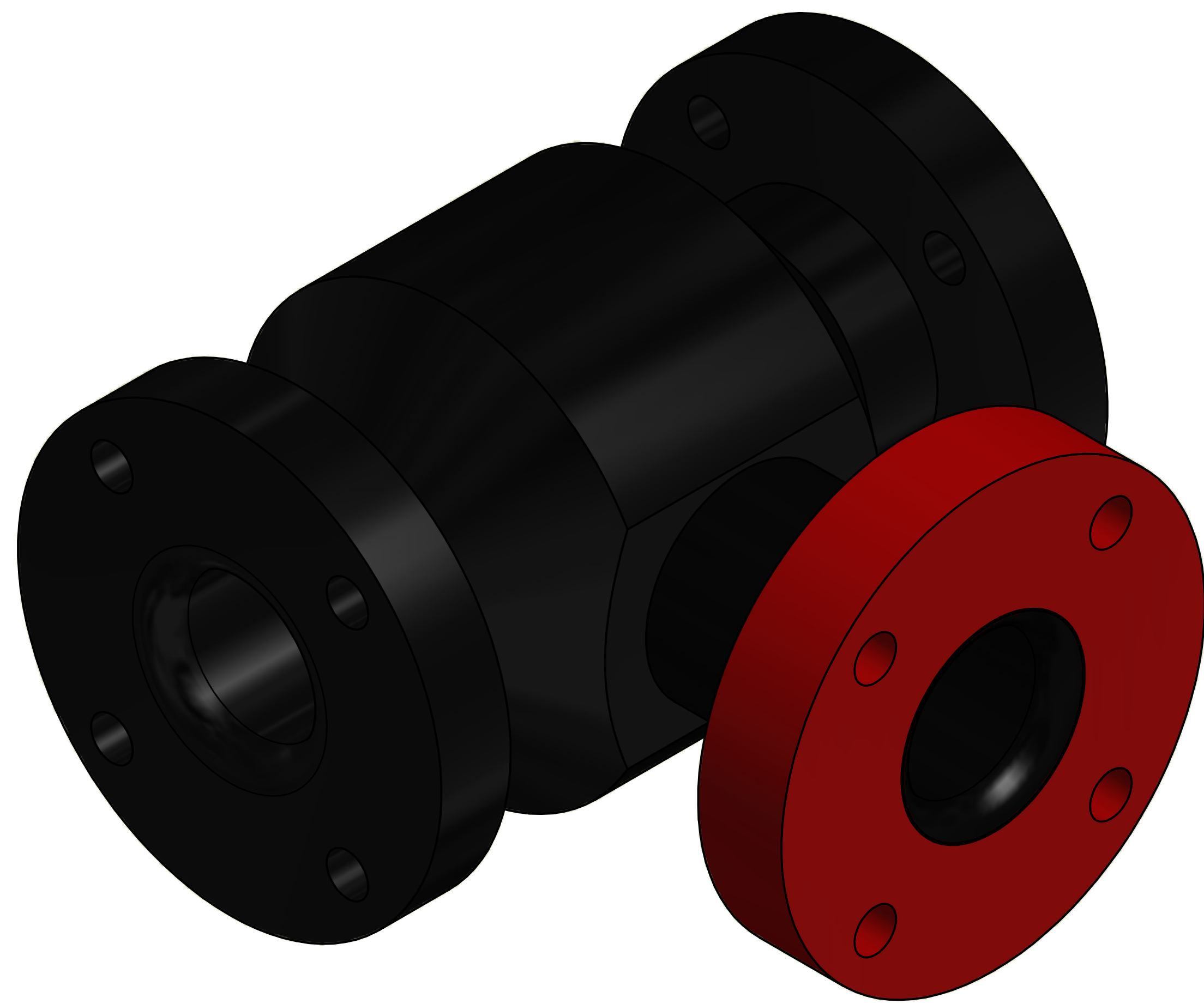
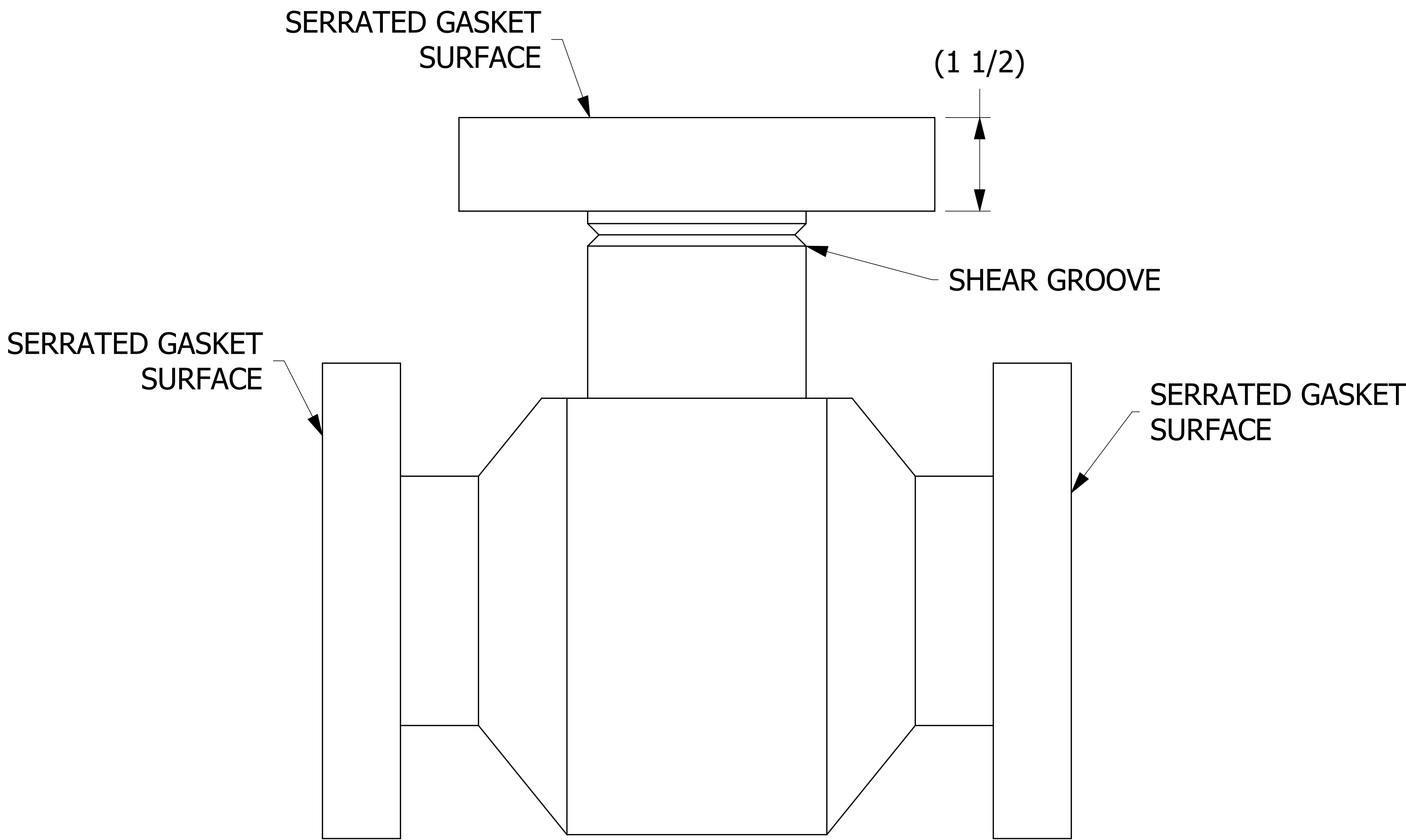
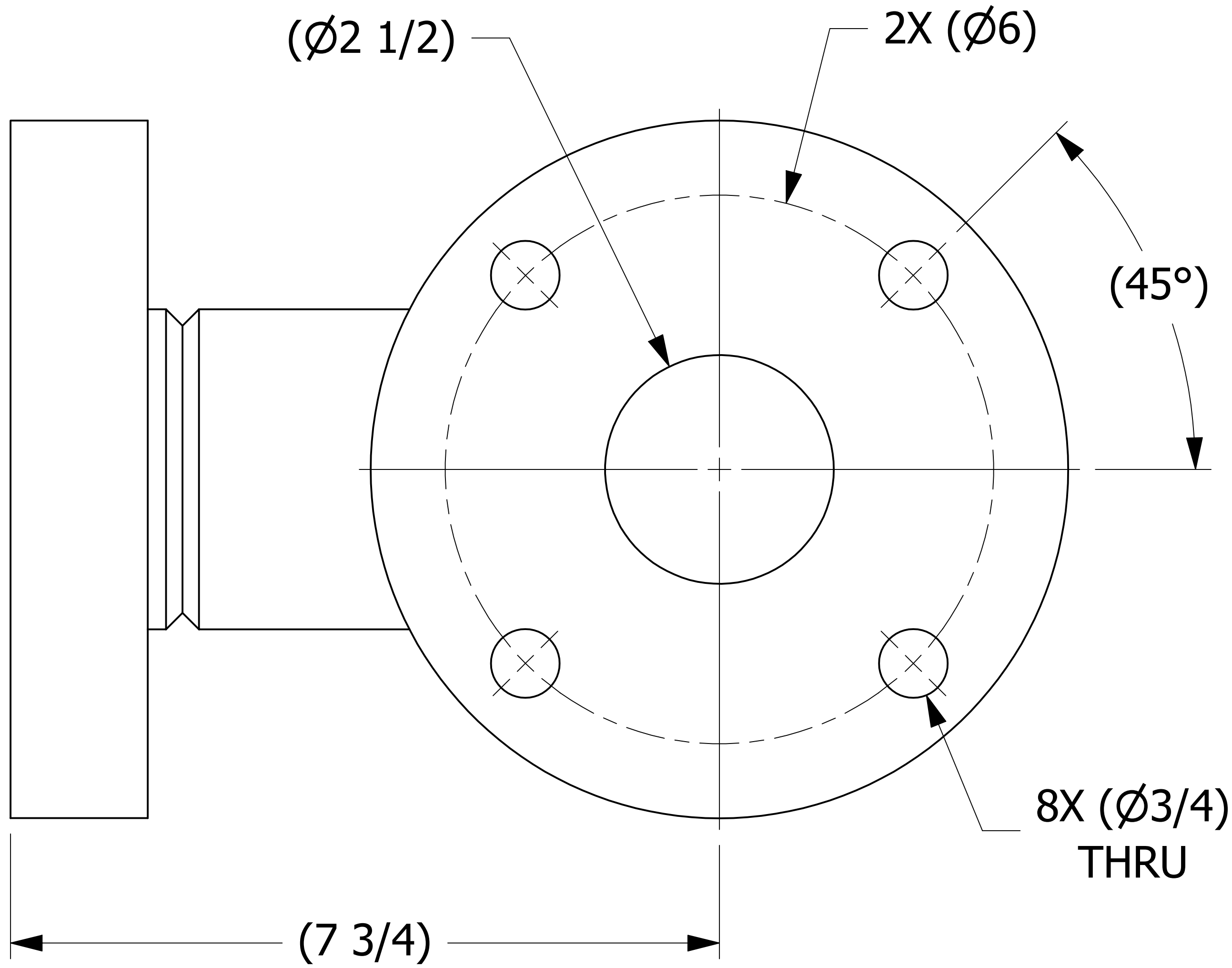
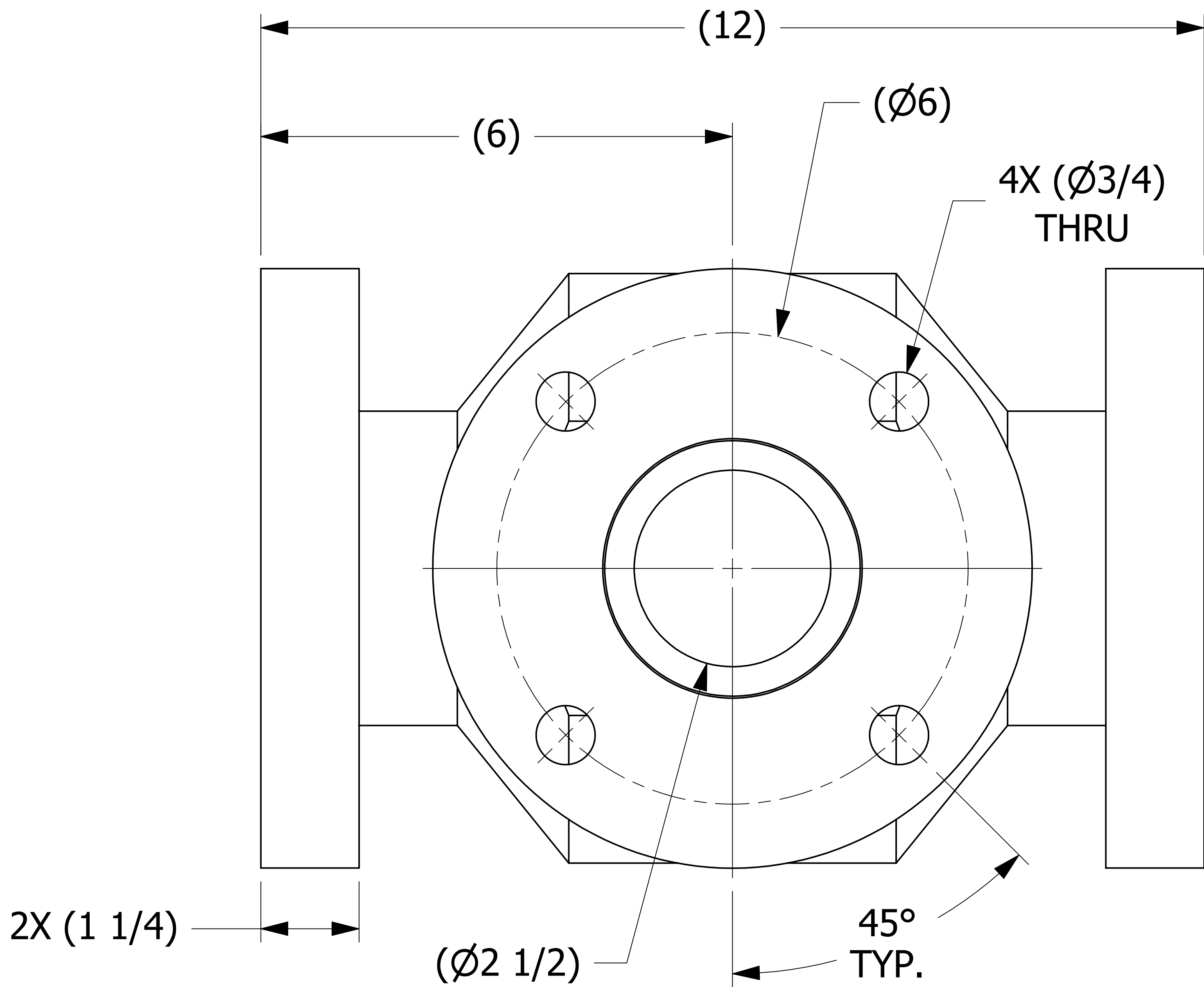


SALES DRAWING SALES DRAWING SALES DRAWING

SALES DRAWING SALES DRAWING SALES DRAWING

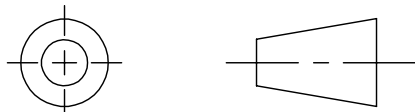


ISOMETRIC VIEW

NOTE:
SOLD TO WORLEY WELDING ONLY.

UNLESS OTHERWISE SPECIFIED
DIMENSIONAL TOLERANCES
FRACTIONAL: $\pm 1/16$
X.XX: $\pm .03$
X.XXX: $\pm .015$
ANGULAR: $\pm 1^\circ$
DEBURR ALL SHARP EDGES.
ALL MACHINED SURFACES TO
HAVE A 125 RMS FINISH UNLESS
NOTED OTHERWISE.

THIRD ANGLE PROJECTION



DRAWN BY: JJK
CHECKED BY: CHL
PROTOTYPE BY: JJK
PROTOTYPE DATE: 4/3/2012
APPROVED FOR PRODUCTION BY: CHL
PRODUCTION DATE: 1/15/2013

C	JG	3-24-16	UPDATED HS3PTB1, NOTES, DIMS; REPLACED A32916 W/ A27178
B	KHK	2-20-13	UPDATED TITLEBLOCK & CURRENT DRAFT STANDARDS
A	JJK	4-4-12	RELEASED FOR PRODUCTION
REV	BY	DATE	DESCRIPTION

PART NAME: PIPE TEE 3"			
MATERIAL: SALCO PE			
PROJECT #:	120402	SHEET #:	1 OF 1
DRAWING #:	E32924	PART #:	HS3PT5
SCALE: 1:1			